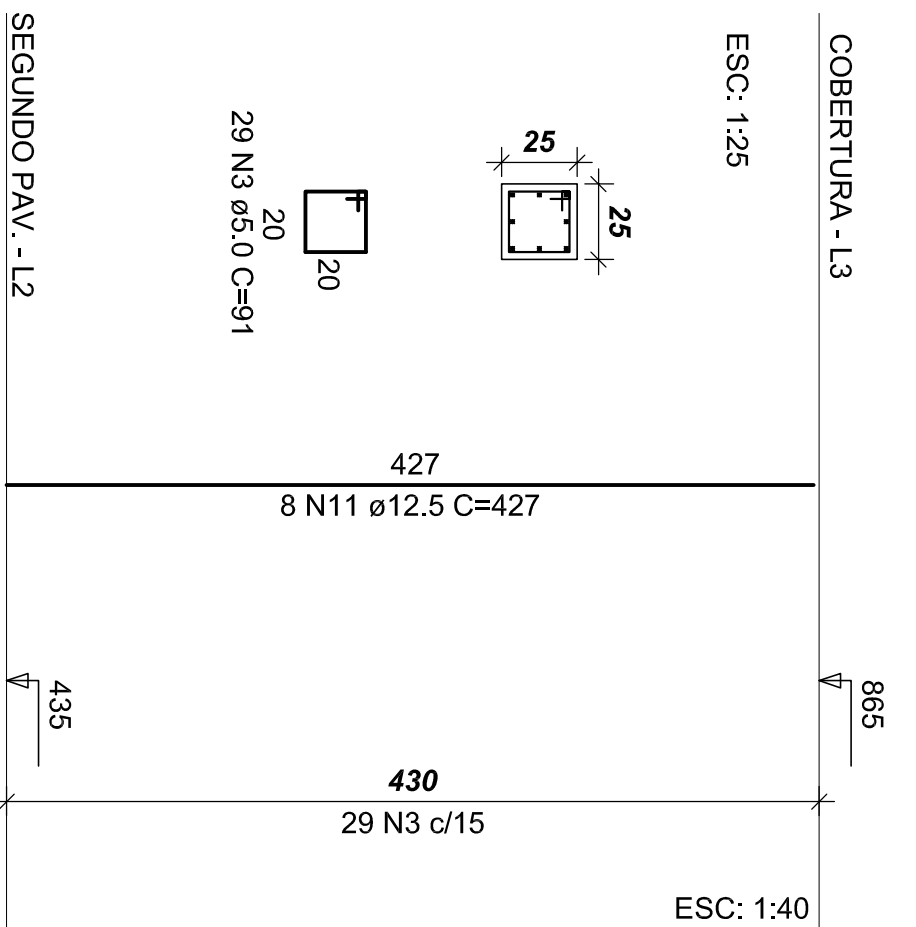
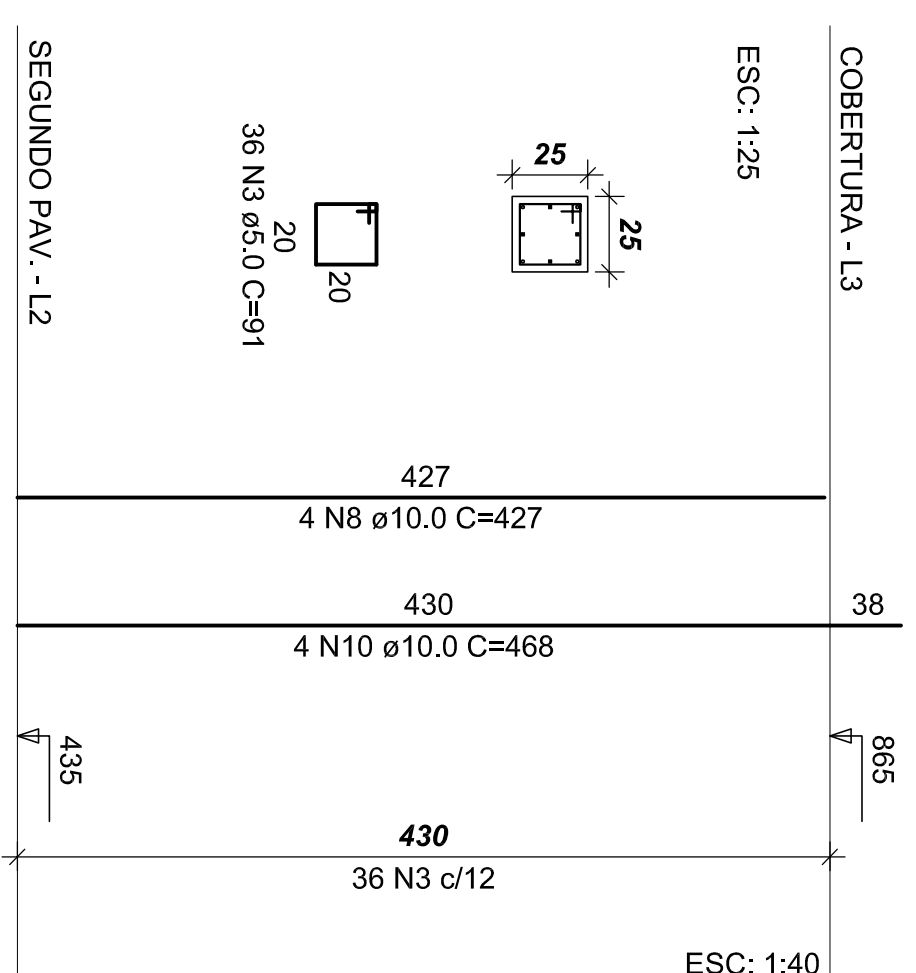
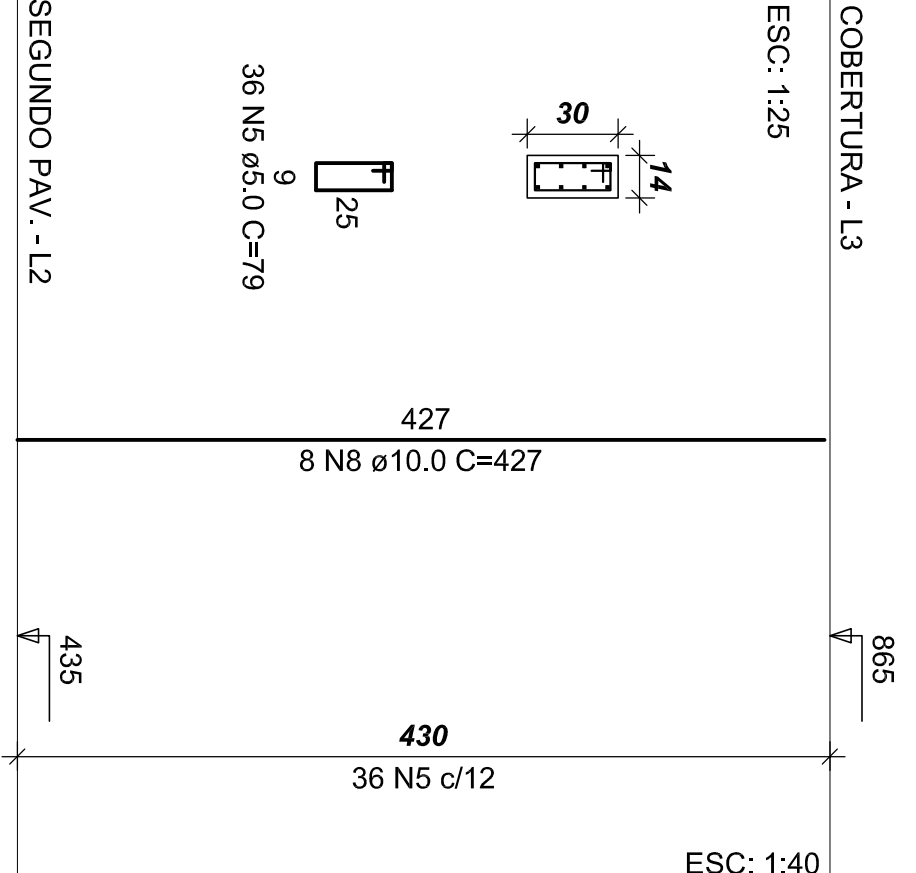
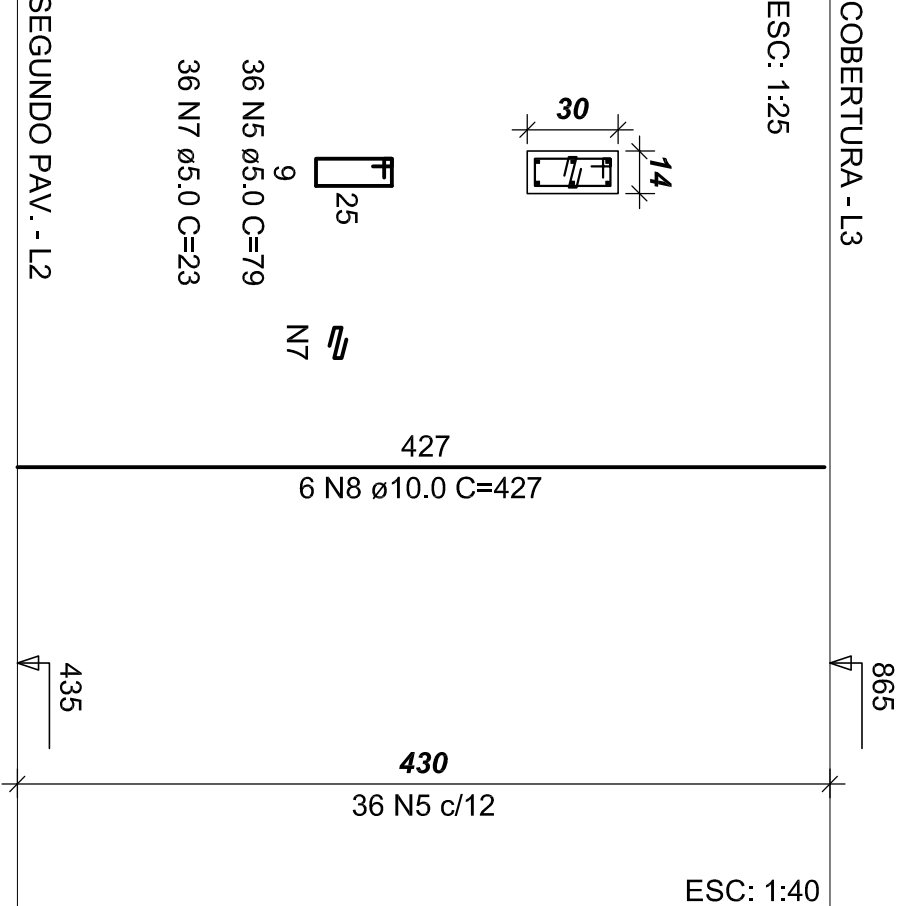
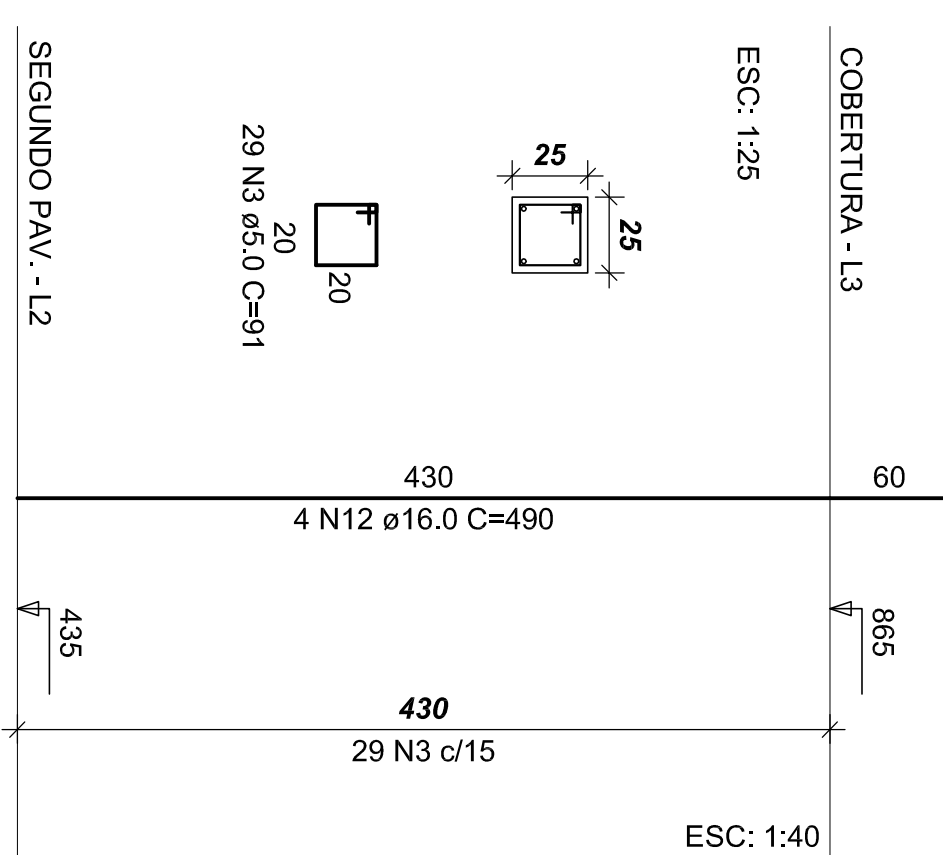
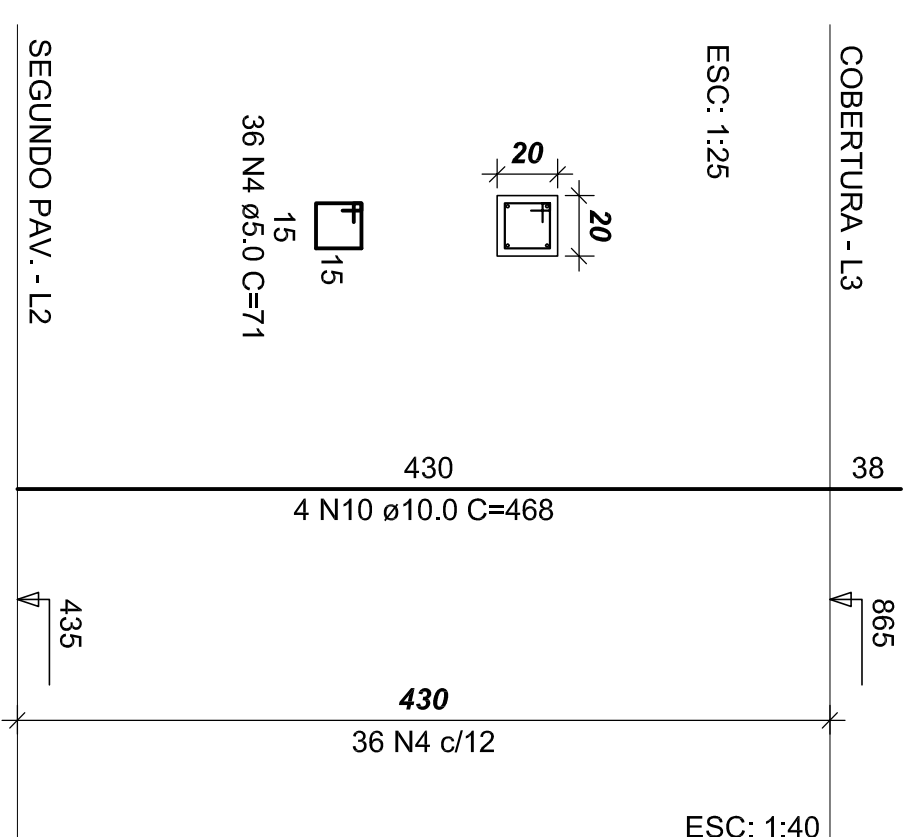


Q	DIAM	N	AGE
1	5,0	1	60
2	5,0	2	50
3	5,0	3	
4	5,0	4	
5	5,0	5	
6	5,0	6	
7	5,0	7	
8	10,0	8	
9	10,0	9	
10	10,0	10	
11	12,5	11	
12	16,0	12	
UNIT (cm)			
191	504		
204	1008		
241	670		
291	324		
71	144		
59	36		
23	36		
427	182		
75	28		
468	64		
427	8		
450			
C.TOTAL			
96264			
24182			
60890			
23004			
11376			
2124			
828			
77714			
2100			
28952			
3416			
1960			

AÇO	DIAM	C.TOTAL (m)	PESO+0% (kg)
CA50	10.0	1097.7	676.9
	12.5	34.2	32.9
CA60	16.0	19.6	31.0
	5.0	2191.6	337.5
PESO TOTAL			
CA50	740.8		
CA60	337.5		

Vol. de concreto total (C-25) = 15.17 m<sup>3</sup>  
Área de forma total = 251.12 m<sup>2</sup>

Vol. de concreto total (C-25) = 15.17 m<sup>3</sup>  
Área de forma total = 251.12 m<sup>2</sup>



P1=P2=P3=P4=P5=P6=P7  
P8=P9=P10=P13=P15  
P17=P20

P36=P40=P47=P50=P53=P54=P55=P56

P38=P57=P56=P39=P60=61=P62=P63=P64=P65  
=P66=P67=P68=P69=70=P71=P72=P73=P74  
=P75=P76=P77=P78=P79=P80=P81=P82=P83  
=P84=P85=P86=P87=88=P89=P90=P91=P92  
=P93=P94=P95=P96=P97=P98=P99=P100=P101  
=P102=P103

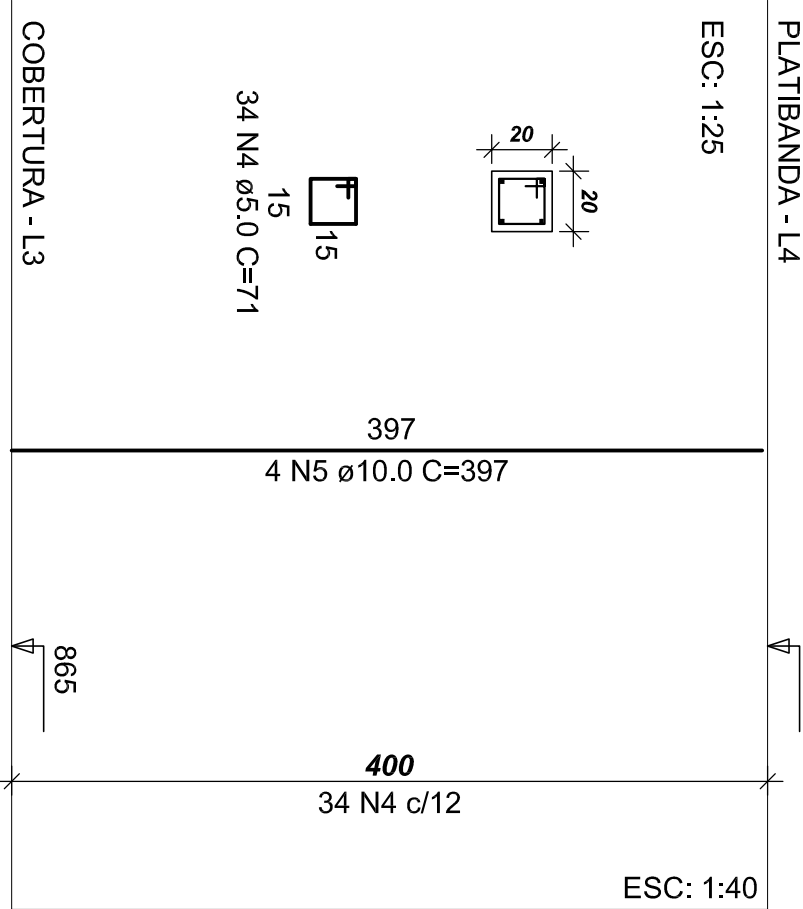
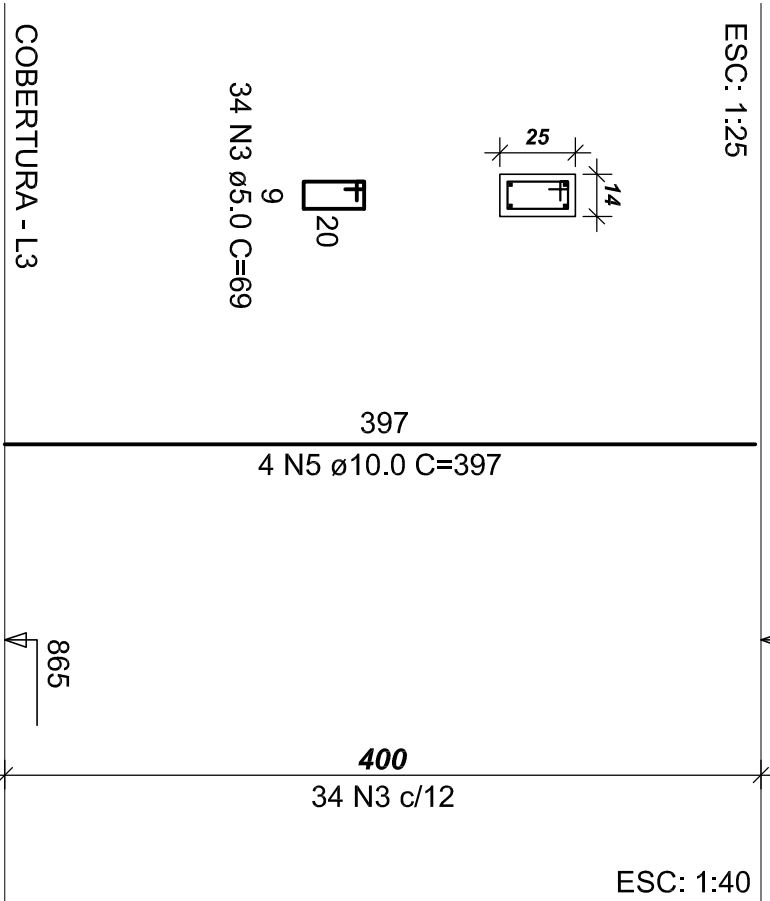
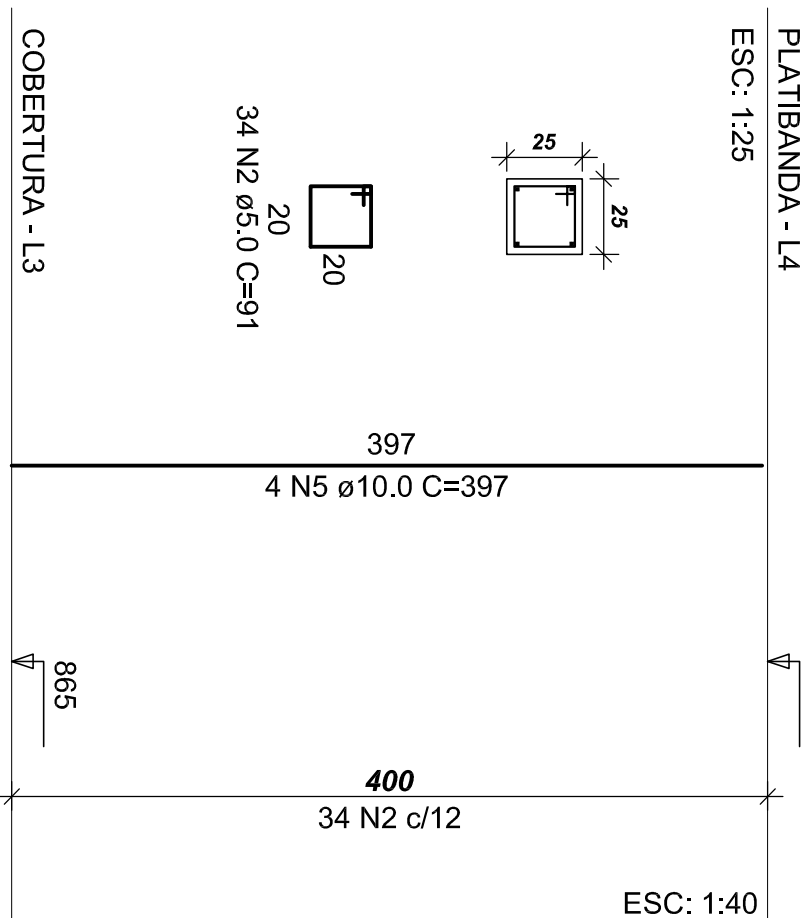
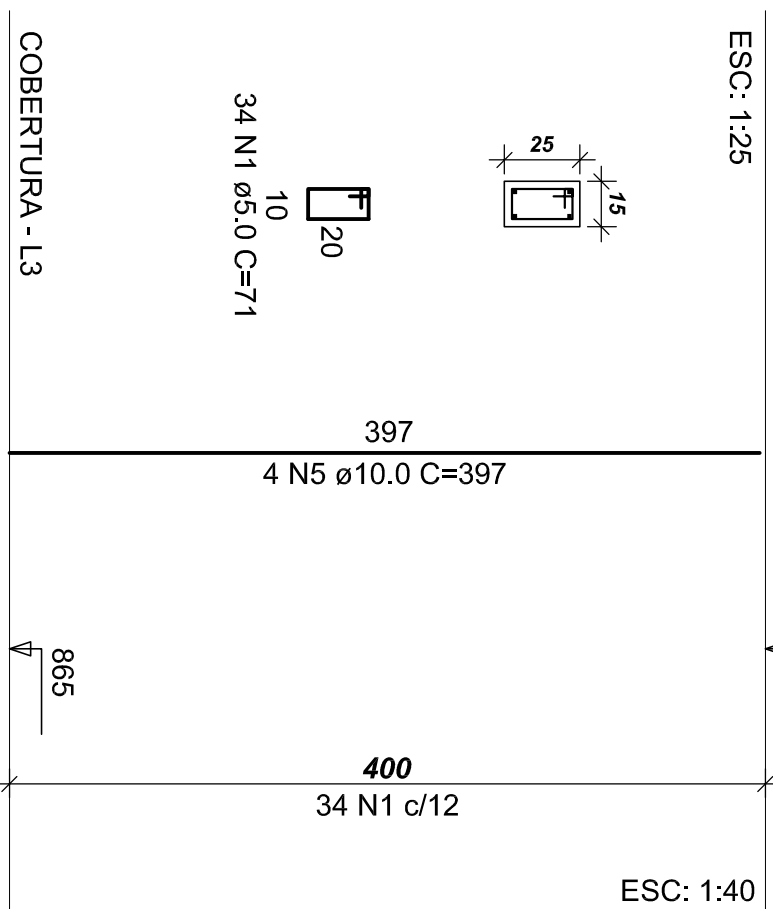
P42

ACO	N	DIAM	Q	UNIT (cm)	C.TOTAL
60	1	5,0	476	71	33736
	2	5,0	272	91	24752
	3	5,0	1632	69	112608
	4	5,0	34	71	2414
50	5	10,0	284	387	112748

AÇO	DIAM	C.TOTAL (m)	PESO+0% (kg)
CA50	10.0	1127.5	695.3
CA60	5.0	1747.7	269.1
PESO TOTAL			
CA50	695.3		
CA60	269.1		

Vol. de concreto total (C-25) = 10.98 m<sup>3</sup>  
Área de forma total = 229.76 m<sup>2</sup>

Vol. de concreto total (C-25) = 10,98 m<sup>3</sup>  
Área de forma total = 229,76 m<sup>2</sup>

[illegible]